

Illustrations of some features of Sanderson Field and Hand Cameras

All Cameras

Nameplates



A



B



C



D



E



F



G

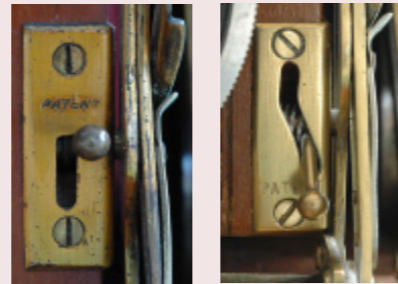


H



I

Lensboard Tilt Latches



L-shaped

S-shaped

Rear Arms



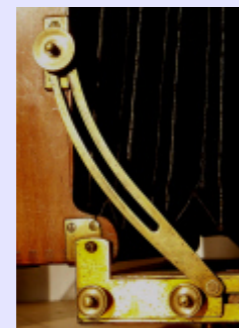
A. Hinged struts that locate into brass posts



D. Swing-back feature



B. Cranked arms with straight slots

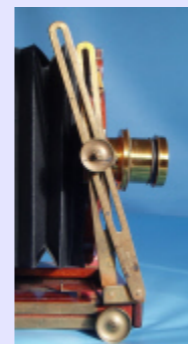


C. Curved slotted arms

Front arms



P. Backward curving slotted arms



Q. Straight slotted arms - no locks



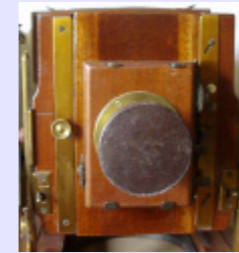
R. Straight slotted arms with vertical locks

Field Cameras

Lensboards



A. Square removable panel



C. Sliding oblong panel



B. Circular with rack and pinion vertical movement



D. Oblong panel, quick release

Front Arms



T. Curved arm at the front and a cranked arm behind



V. Cranked arm at the front and a straight arm behind, complete with locating pins in the lens panel

Hand Cameras

Front Standard



B. Locating pin in a spring-steel arm



A. Locating pins on the base - 1 or 2 or 3 pairs.



C. Locking with a thumb screw



D. Locking with a lever

Focusing tracks



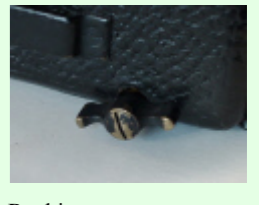
A. Square-tooth rack



B. Diagonal-toothed rack



C. Two diagonal-toothed racks

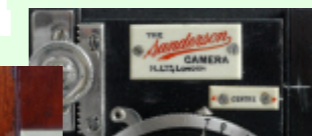


D. Racking arrangement on the body to close the gap when drawing out the lens-panel

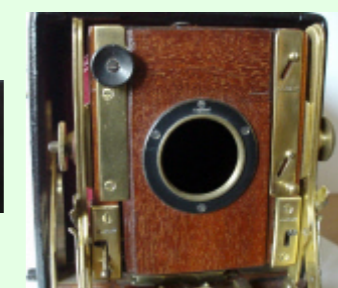
Lensboards



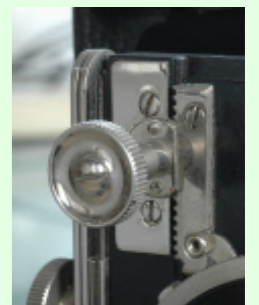
G. Lens-panel slots into a groove with a locking nut and is held by a small tag on the right-hand side.



H. As G, but no tag.



I. Tag on right replaced by a quick-release brass strip.



J. Rack and pinion to raise lens panel.